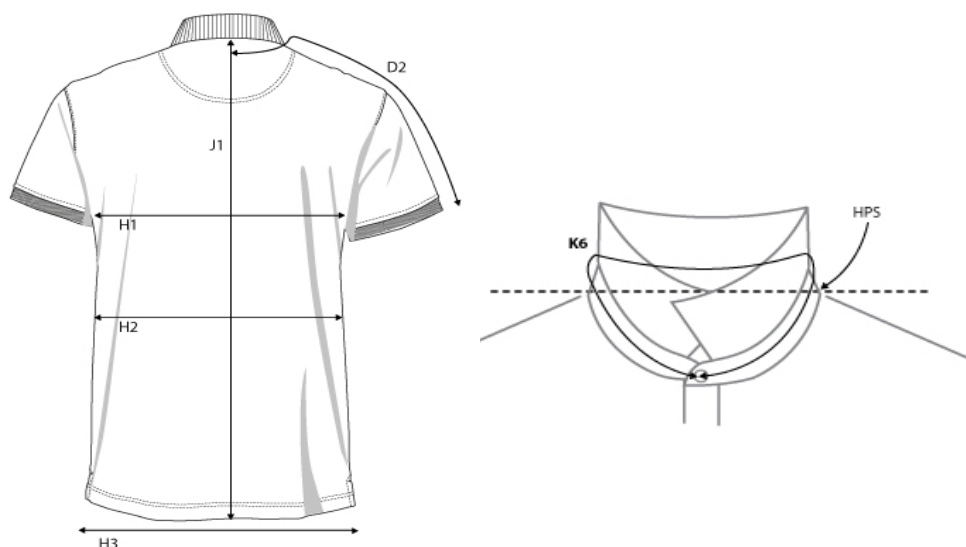
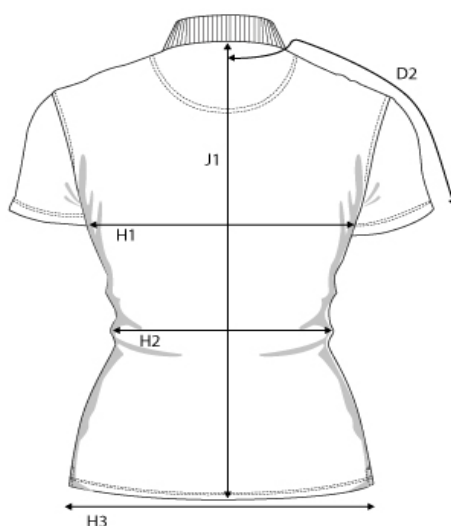


SIZE AND FIT: HARVARD



HARVARD Mens

| Base size: M / Measurement (in cm) | Diagram | S | M | L | XL | XXL | 3XL | 4XL |
|------------------------------------|---------|------|-------------|------|------|------|------|------|
| Sleeve Length from shoulderseam | D3 | 19.5 | 20.5 | 21.5 | 22.5 | 23.5 | 24.5 | 24.5 |
| Chest Width at armhole | H1 | 47 | 50 | 53 | 56 | 59 | 62 | 65 |
| Waist | H2 | 46 | 49 | 52 | 55 | 58 | 61 | 64 |
| Bottom width | H4 | 46 | 49 | 52 | 55 | 58 | 61 | 64 |
| Full Length at centre back | J1 | 69 | 71 | 73 | 75 | 77 | 79 | 79 |
| Neckline CF to CF | K6 | 42 | 43.5 | 45 | 46.5 | 48 | 49.5 | 51 |



HARVARD Ladies

| Base size: M / Measurement (in cm) | Diagram | XS | S | M | L | XL | XXL |
|------------------------------------|---------|----|------|-----------|------|----|------|
| Sleeve Length from shoulderseam | D3 | 15 | 15.5 | 16 | 16.5 | 17 | 17.5 |
| Chest Width at armhole | H1 | 39 | 42 | 45 | 48 | 51 | 54 |
| Waist | H2 | 35 | 38 | 41 | 44 | 47 | 50 |
| Bottom Width | H4 | 39 | 42 | 45 | 48 | 51 | 54 |
| Full Length at centre back | J1 | 59 | 61 | 63 | 65 | 67 | 69 |