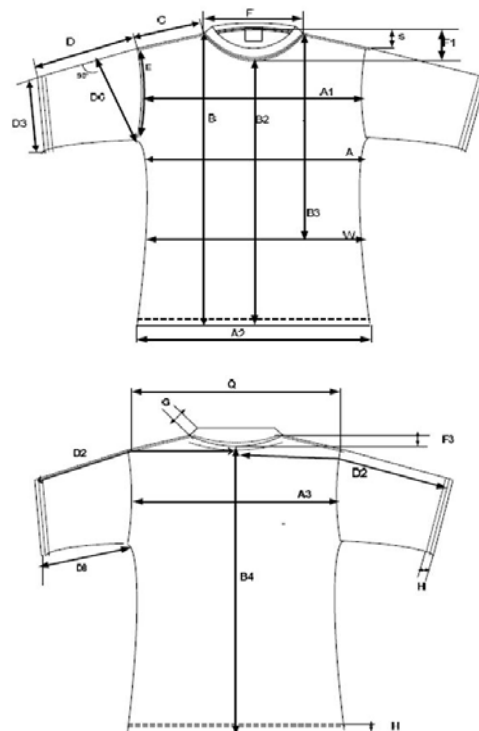




Garment Specifications - Style 5000L Heavy Cotton Missy Fit T-Shirt 100% Cotton Preshrunk , 185 g/m²

MEASUREMENTS IN CENTIMETERS

Dimensions - Size / Dimensiones - Talla	S	M	L	XL	2XL	Tol
A- Chest *	44	49	54	59	64	± 2
A1- Front shoulder breadth	34	37.5	40	44.5	48	± 1.5
A2- Bottom width	44	49	54	59	64	± 2
A3-Back shoulder breadth	34	37.5	40	44.5	48	± 1.5
B- Length from HPS *	65	66	69	71	72	± 3
B2- Front body length	52	53	56	58	58.5	± 3
B3- Waist height	41	42	43	44	45	± 3
B4- Back body length	62	63.5	66	69	70	± 3
C- Shoulder	11	11	13	14	15	± 1
D- Sleeve length (Center cap)	15	15	16	16.5	17	± 1.5
D2- Sleeve length (Center back) *	34	36	37	40	42.5	± 2
D3- Sleeve opening relaxed	15	16	16.5	18	19	± 1.5
D6- Sleeve width	18	19	20	22	23	± 1
D8- Undersleeve length *	5	5	6	6	6	± 1.5
E- Armhole	22	23	24	25	27	± 2
F- Neck opening *	19	20	20	22	22	± 1.5
F1- Front Neck Drop	12	12	12	13	13	± 1
F3- Back neck drop	2.5	2.5	2.5	2.5	2.5	± 1
G- Neck rib height	1	1	1	1	1	± 0.3
H- Hem height	1.5	1.5	1.5	1.5	1.5	± 0.3
Q- Across shoulder	38	41	43	47	50	± 1.5
S- Shoulder slope	3	3	3	3	3	± 0.5
W- Waist width	41	46	50	55	60	± 2



Packaging Information

Style	Size	Case type	Case Outside Dimension L x W x H (cm)	Packaging 1st and 2nd Quality						
				# Doz	Case net weight (lbs)	Gross weight White (lbs)	Gross weight Lights (lbs)	Gross weight Dark (lbs)	Cube	Case per Pallet
5000L	S	8	54.61 x 41.28 x 14.69	3	2.00	13.20	13.28	13.37	1.163	54
	M	8	54.61 x 41.28 x 14.69	3	2.00	14.65	14.75	14.84	1.163	54
	L	8	54.61 x 41.28 x 14.69	3	2.00	16.18	16.29	16.40	1.163	54
	XL	8	54.61 x 41.28 x 14.69	3	2.00	17.79	17.91	18.02	1.163	54
	2XL	1	54.61 x 41.28 x 22.23	3	2.36	19.73	19.87	20.00	1.769	36

Total Colours

15